

<b>CONSTRUCTION STRUCTURE STRUKTUR STRUCTUUR</b>	Tufting 5/64" minituft Tufté 5/64" minituft Getuftet 5/64" minituft Getuft 5/64" minituft	<b>STAIR SUITABILITY ESCALIERS TREPPENEIGNUNG TRAPPENGESCHIKTHEID</b>	EN 1963 A: intensive use
<b>PILE MATERIAL COMPOSITION DU VELOURS POLMATERIAL POOLMATERIAAL</b>	100% PA 6 solution dyed	<b>PERMANENTLY ANTISTATIC ANTISTATIQUE PERMANENT PERMANENT ANTISTATISCH PERMANENT ANTISTATISCH</b>	ISO 6356 < 2 kV
<b>PRIMARY BACKING SUPPORT TRÄGERMATERIAL TUFTDOEK</b>	Non woven PES Non tissé PES Vlies, PES Vilt, PES	<b>IMPACT NOISE RATING ISOLATION PHONIQUE TRITTSCHALLVERBESSERUNG GELUIDSISOLATIE</b>	ISO 140-8 18 dB ΔLw
<b>SECONDARY BACKING DOSSIER RÜCKEN TAPIJTRUG</b>	Action Back	<b>SOUND ABSORPTION ABSORPTION PHONIQUE SCHALLABSORPTIONSGRAD GELUIDSABSORPTIE</b>	ISO 354 0,15 αw
<b>PILE WEIGHT POIDS DU VELOURS POLEINSATZGEWICHT POOLGEWICHT</b>	Ca. 500 gr/m <sup>2</sup>	<b>THERMAL RESISTANCE RÉSISTANCE THERMIQUE WÄRMEDURCHLASSWIDERSTAND WARMTEDOORLAATWEERSTAND</b>	ISO 8302 0,05 m <sup>2</sup> K/W
<b>TOTAL WEIGHT POIDS TOTAL GESAMTGEWICHT TOTAAL GEWICHT</b>	Ca. 2.400 gr/m <sup>2</sup>	<b>FASTNESS TO LIGHT SOLIDITÉ A LA LUMIÈRE LICHTECHTHEIT LICHTECHTHEID</b>	ISO 105-B02 ≥ 7
<b>PILE HEIGHT EPAISSEUR DU VELOURS POLHÖHE POOLHOOGTE</b>	Ca. 1,1 mm	<b>COLOUR FASTNESS TO WATER SOLIDITÉ À L'EAU WASSERRECHTHEIT WATERECHTHEID</b>	EN ISO 105-E01 ≥ 4-5
<b>TOTAL HEIGHT EPAISSEUR TOTALE GESAMTHÖHE TOTALE DIKTE</b>	Ca. 5,1 mm	<b>RUBBING FASTNESS SOLIDITÉ AU FROTTEMENT REIBECHTHEIT WRIJFECHTHEID</b>	EN ISO 105-X12 ≥ 4
<b>TUFT DENSITY NOMBRES DE POINTS NOPPENZAHL AANTAL PUNTEN</b>	Ca. 200.000/m <sup>2</sup>	<b>FIRE RESISTANCE COMPORTEMENT AU FEU BRENNVERHALTEN BRANDGEDRAG</b>	EN 13501-1 Cfl-s1 (if glued)
<b>PILE DENSITY DENSITÉ DU VELOURS POLROHDICHTE POOLDICHTHEID</b>	Ca. 0,140 g/cm <sup>3</sup>	<b>NUMBER OF COLOURS NOMBRES DE COULEURS ANZAHL FARBEN AANTAL KLEUREN</b>	11
<b>CLASSIFICATION CLASSEMENT KLASSIFIKATION CLASSIFICATIE</b>	EN 1307 33 - LC1	<b>WIDTH LARGEUR BREITE BREEDTE</b>	EN ISO 3018 ca. 400 cm
<b>CASTOR CHAIR SUITABILITY CHAISE À ROULETTES STUHLROLLENEIGNUNG ROLSTOELGESCHIKTHEID</b>	EN 985 A: intensive use		

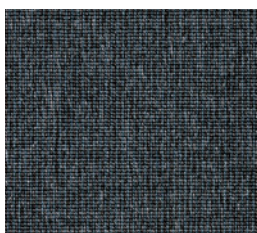


EN14041  
**CE**  
19  
ITC CO BV  
Kanegemstraat 15 - BE 8700 Tielt  
**DOP: 1011#IE0ACV**  
Textile Floor Covering EN1307  
Notified body 2401  
my.itc-carpets.com

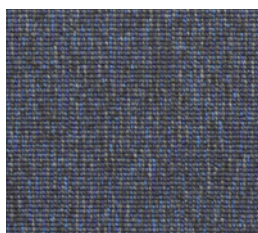




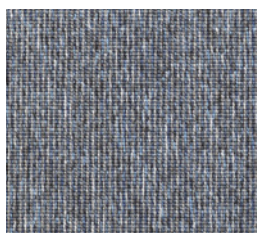
▲ 93



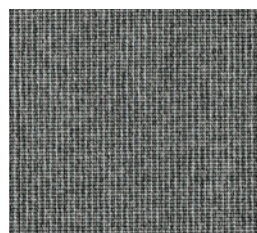
▲ 73



▲ 78



▲ 79



▲ 90



▲ 34



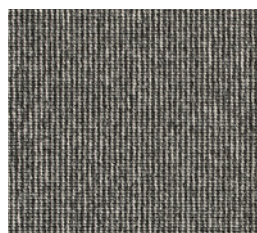
▲ 94



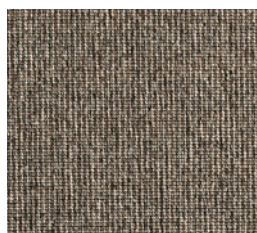
▲ 99



▲ 98



▲ 96



▲ 49