

CONSTRUCTION STRUCTURE STRUKTUR STRUCTUUR
 Tufting 1/10" loop pile
 Tufté 1/10" bouclé
 Getuftet 1/10" Schlinge
 Getuft 1/10" lussenpool

PILE MATERIAL COMPOSITION DU VELOURS POLMATERIAL POOLMATERIAAL
 100% PA 6 IMPREL®

PRIMARY BACKING SUPPORT TRÄGERMATERIAL TUFTDOEK
 Non woven PES
 Non woven PES
 Vlies PES
 Non woven PES

SECONDARY BACKING DOSSIER RÜCKEN TAPIJTRUG
 Action Back

PILE WEIGHT POIDS DU VELOURS POLEINSATZGEWICHT POOLGEWICHT
 Ca. 460 gr/m²

TOTAL WEIGHT POIDS TOTAL GESAMTGEWICHT TOTAAL GEWICHT
 Ca. 1.530 gr/m²

PILE HEIGHT EPAISSEUR DU VELOURS POLHÖHE POOLHOOGTE
 Ca. 2,5 mm

TOTAL HEIGHT EPAISSEUR TOTALE GESAMTHÖHE TOTALE DIKTE
 Ca. 5 mm

TUFT DENSITY NOMBRES DE POINTS NOPPENZAHL AANTAL PUNTEN
 Ca. 205.000/m²

PILE DENSITY DENSITÉ DU VELOURS POLROHDICHTHEIT POOLDICHTHEID
 Ca. 0,120 g/cm³

CLASSIFICATION CLASSEMENT KLASSIFIKATION CLASSIFICATIE
 EN 1307
 33 - LC1

PRODIS/GUT CC5E2518

CASTOR CHAIR SUITABILITY CHAISE À ROULETTES STUHLROLLENEIGNUNG ROLSTOELGESCHIKTHEID
 EN 985
 A: intensive use

STAIR SUITABILITY ESCALIERS TREPPENEIGNUNG TRAPPENGESCHIKTHEID
 EN 1963
 A: intensive use

PERMANENTLY ANTISTATIC ANTISTATIQUE PERMANENT PERMANENT ANTISTATISCH PERMANENT ANTISTATISCH
 ISO 6356
 < 2 kV

IMPACT NOISE RATING ISOLATION PHONIQUE TRITTSCHALLVERBESSERUNG GELUIDSISOLATIE
 ISO 140-8
 21 dB ΔLw

SOUND ABSORPTION ABSORPTION PHONIQUE SCHALLABSORPTIONSGRAD GELUIDSABSORPTIE
 ISO 354
 0,15 αw

THERMAL RESISTANCE RÉSISTANCE THERMIQUE WÄRMEDURCHLASSWIDERSTAND WARMTEDOORLAATWEERSTAND
 ISO 8302
 0,06 m² K/W

FASTNESS TO LIGHT SOLIDITÉ A LA LUMIÈRE LICHTECHTHEIT LICHTECHTHEID
 ISO 105-B02
 ≥ 5-6

COLOUR FASTNESS TO WATER SOLIDITÉ À L'EAU WASSERRECHTHEIT WATERECHTHEID
 EN ISO 105-E01
 ≥ 4-5

FIRE RESISTANCE COMPOTEMENT AU FEU BRENNVERHALTEN BRANDGEDRAG
 EN 13501-1
 Bfl-s1 (if glued)


RUBBING FASTNESS SOLIDITÉ AU FROTTEMENT REIBECHTHEIT WRIJFECHTHEID
 EN ISO 105-X12
 ≥ 4

NUMBER OF COLOURS NOMBRES DE COULEURS ANZAHL FARBEN AANTAL KLEUREN
 21

WIDTH LARGEUR BREITE BREEDTE
 EN ISO 3018
 ca. 400 cm




EN14041



16

ITC CO BV
 Kanegemstraat 15 - BE 8700 Tielt

DOP: 1011#IE0ABV
 Textile Floor Covering EN1307
 Notified body 2401



my.itc-carpets.com

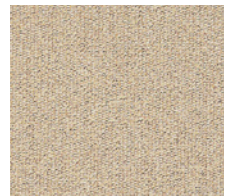


Master_{AB}

The Long Play collection



▲ 33



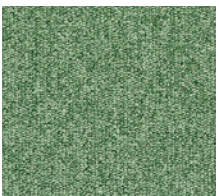
▲ 37



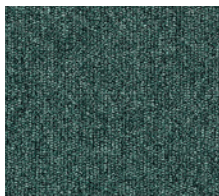
▲ 36



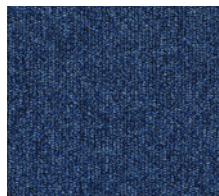
▲ 45



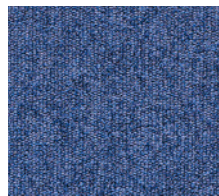
▲ 27



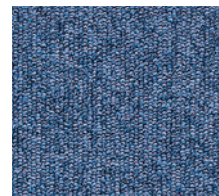
▲ 490



▲ 370



▲ 76



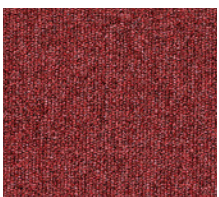
▲ 350



▲ 297



▲ 116



▲ 11



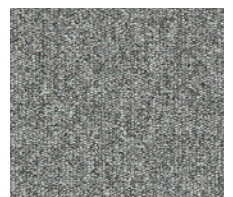
▲ 66



▲ 55



▲ 960



▲ 196



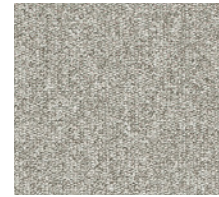
▲ 198



▲ 194



▲ 880



▲ 900



▲ 950